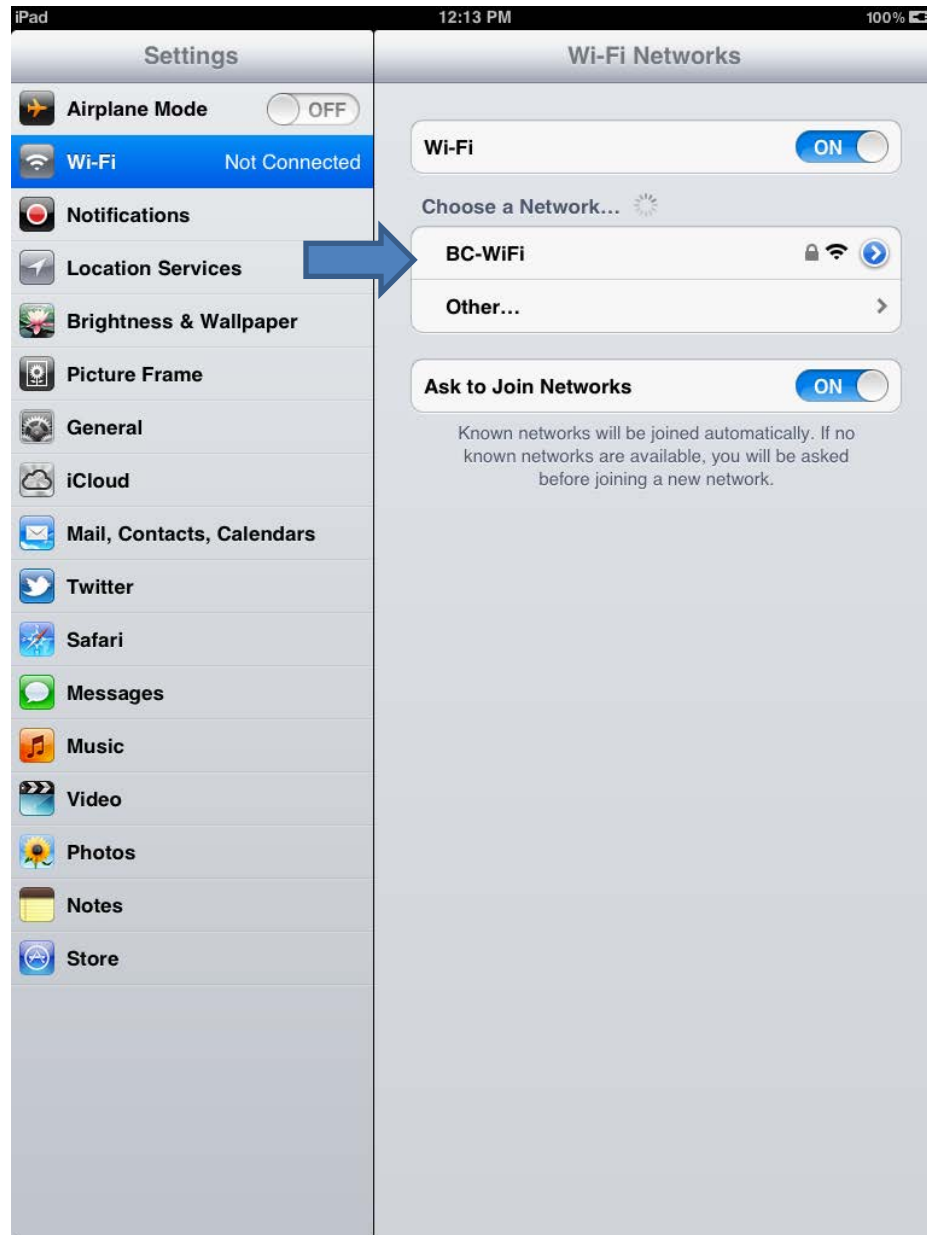


BC-WiFi Setup Guide for Apple Devices

1) Navigate to the **Settings** menu on your device, and then select **Wi-Fi**.

Click on **BC-WiFi** from the available Wi-Fi networks. If you are unable to see **BC-WiFi**, then there is no wireless signal in your current location.

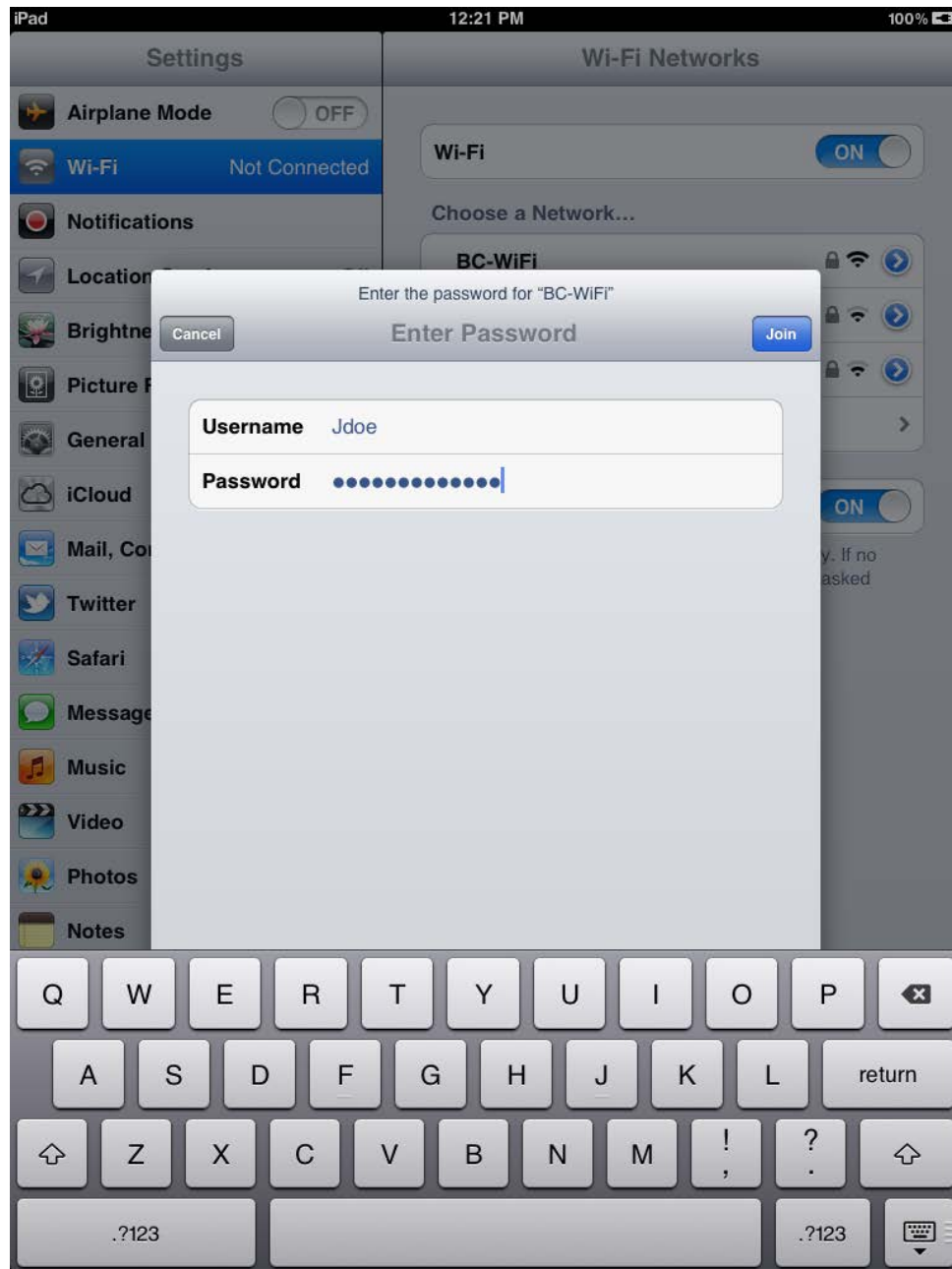


2) You should now be prompted to enter the credentials to connect.

Username: Your BC E-Mail username

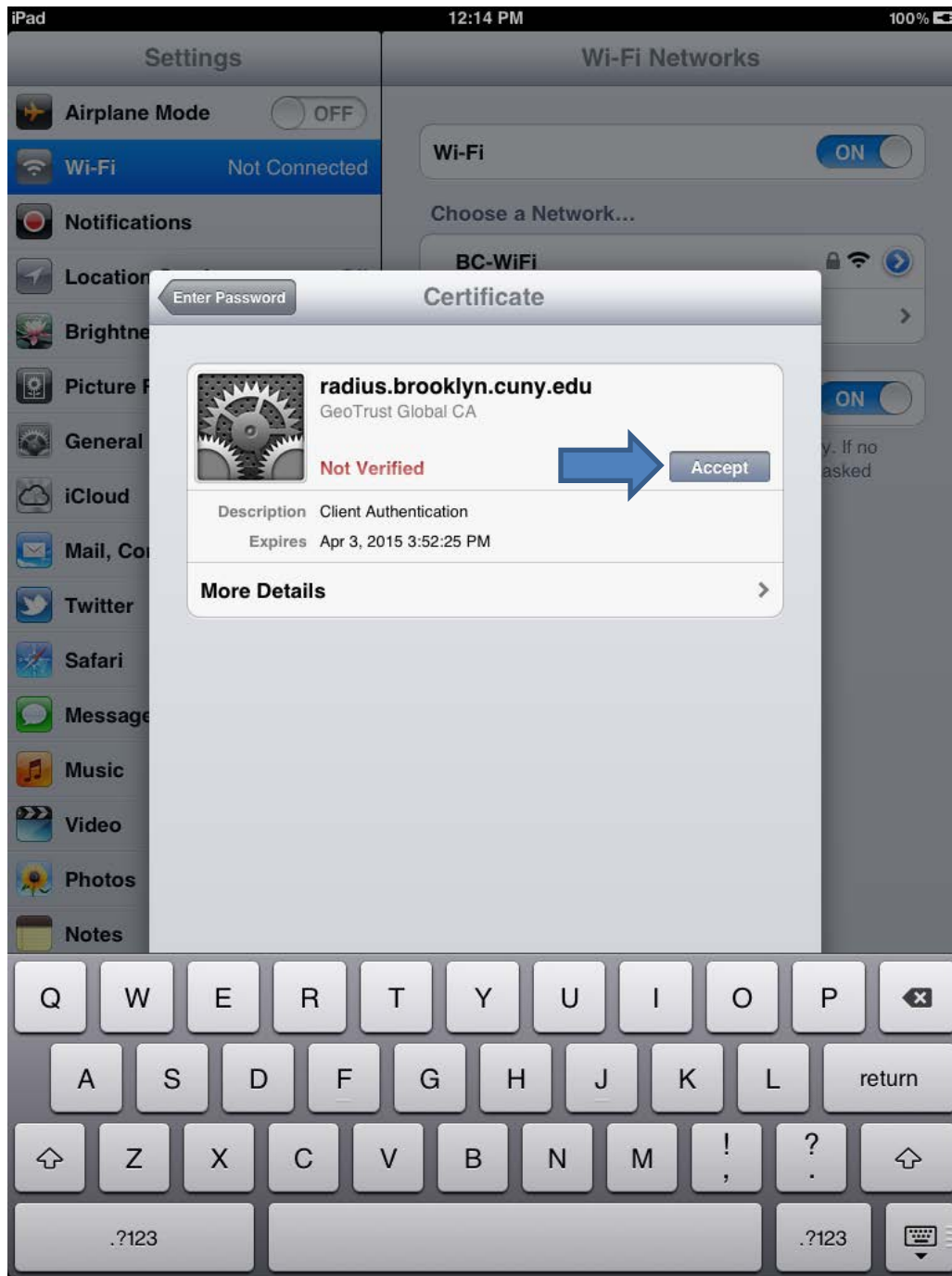
- For Students, enter your BC email username **followed by** @bcacad.local (e.g. Jane.Doe90@bcacad.local)
- For Staff/Faculty, enter **only** the username. This is the part that appears **before** @brooklyn.cuny.edu

Password: Your BC E-Mail password



Select **Join** to continue.

3) If you receive a message regarding a Certificate, click on **Accept**.



You should now be connected to BC-WiFi.

