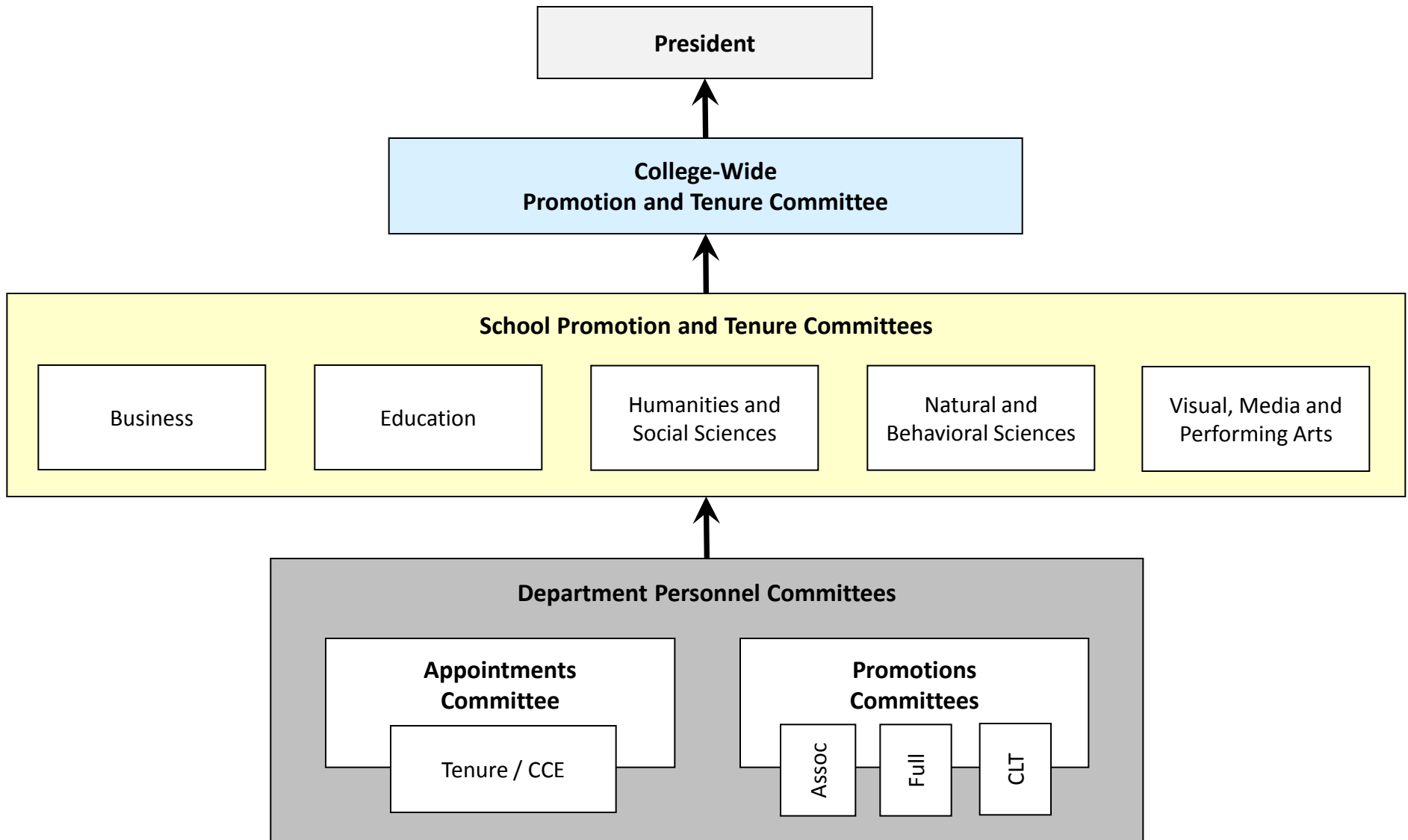


Promotion & Tenure Review



Membership of Promotion and Tenure Review Committees

Departmental Review

Tenure and CCE:

The department's appointments committee votes on reappointment with tenure for professorial titles and college laboratory technicians (CLT). This committee also votes on reappointment of lecturers with the certificate of continuous employment (CCE).

Promotion to Associate Professor:

Full professors, associate professors and the department chairperson vote on promotion to associate.

Promotion to Full Professor:

Full professors and the department chairperson vote on promotion to full professor.

Promotion of CLTs:

Tenured faculty will vote on promotion of CLTs to the ranks of senior college laboratory technician and chief laboratory technician.

The recommendations on promotion and tenure/CCE are submitted to the appropriate School Promotion and Tenure Review Committee at the next level.

School Review

There are five promotion and tenure review committees corresponding to the five schools.

Each school committee will consist of one tenured associate or full professor, excluding chairpersons, from each department in that school. If there are fewer than five departments in a school, additional members-at-large will be elected to bring the membership to five.

Each School Promotion and Tenure Review Committee will meet and discuss the candidates with the Dean of the respective school prior to voting. The Dean will not have a vote nor be present for the voting procedure.

Each school review committee will consider all promotion and tenure/CCE within its school. A member of each school review committee will report its recommendation to the college-wide promotion and tenure committee.

College-wide Review

The college-wide promotion and tenure committee will be composed of all department chairpersons.

The chairperson of the CAP Liaison Committee will serve as chair of this committee.

The college-wide committee considers all candidates for promotion and tenure/CCE and reviews the recommendations of the school review committees. The recommendations of the college-wide committee, along with the recommendations of the school review committees, are forwarded to the president for consideration.