

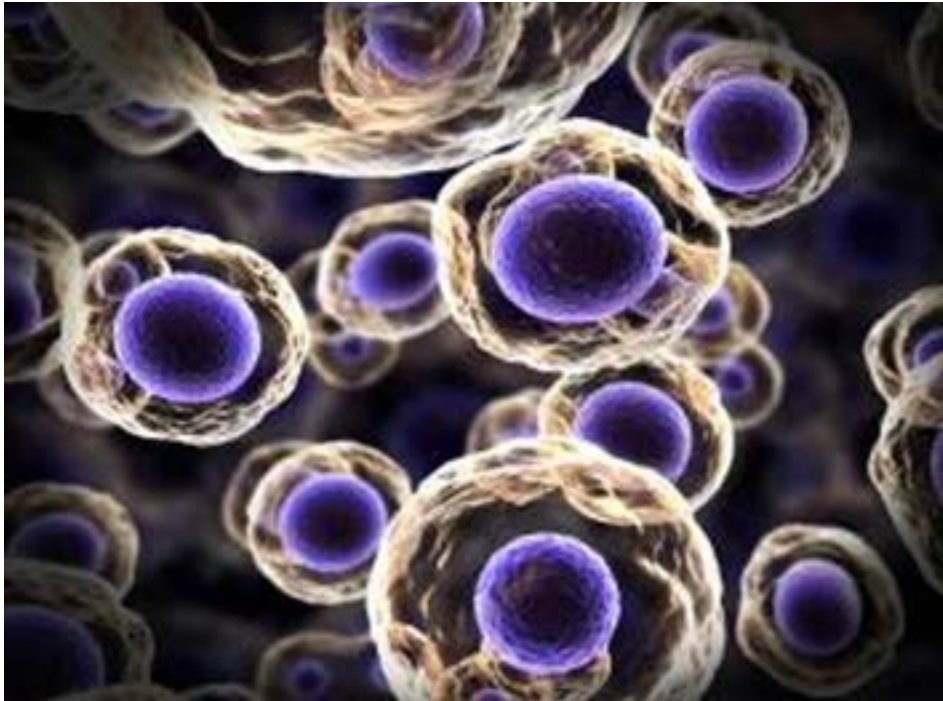
# The Wolfe Institute

---

*The Ethyle R. Wolfe Institute for the Humanities,  
in cooperation with Sheldon Krinsky, Zicklin Professor of Philosophy/Honors Academy,  
presents theatrical readings*

---

## Stem Cell Dialogues



Should scientists be allowed to destroy human embryos for the purpose of extracting stem cells that may be helpful for treating diseases like diabetes and Parkinson's?

Should women be encouraged to contribute eggs and stored IVF embryos for research and be paid for the eggs or embryos?

These are the issues discussed in *Stem Cell Dialogues*. Brooklyn College theater majors will be taking on the roles of different voices in our society arguing their views on the ethics of one of the most controversial areas of contemporary biomedical science.

**Student performances by:**

**Leta Hischmann-Levy, Anastasia Bell, Walter Petryk, and Henry Ponthieu**

---

**Wednesday, March 19, 2014**

**3:30 to 5 p.m.**

**3109 Boylan Hall**

**Brooklyn College**

**For information:** [skrimsky@brooklyn.cuny.edu](mailto:skrimsky@brooklyn.cuny.edu) **Twitter:** [twitter.com/Wolfe\\_Institute](https://twitter.com/Wolfe_Institute)